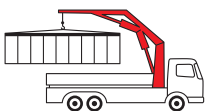


PK 56502

High Performance

PALFINGER CRANE



KTL
protected

**Paltronic
50**
controlled

RRC^{*)}
Radio Remote Control
operated

ISC^{*)}
Integrated Stability Control
monitored

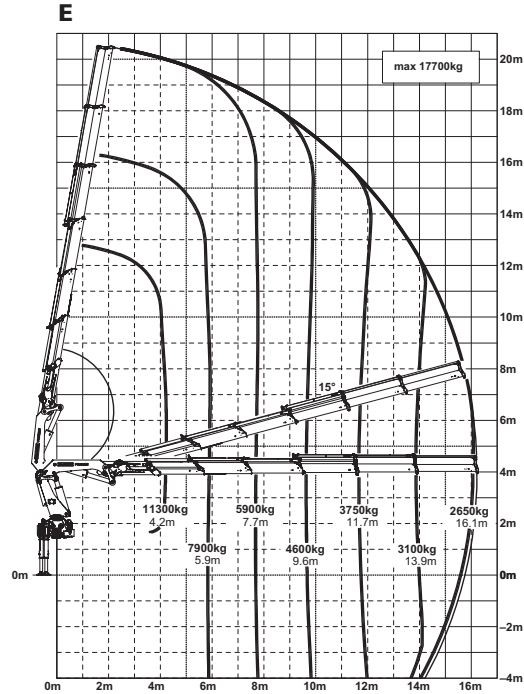
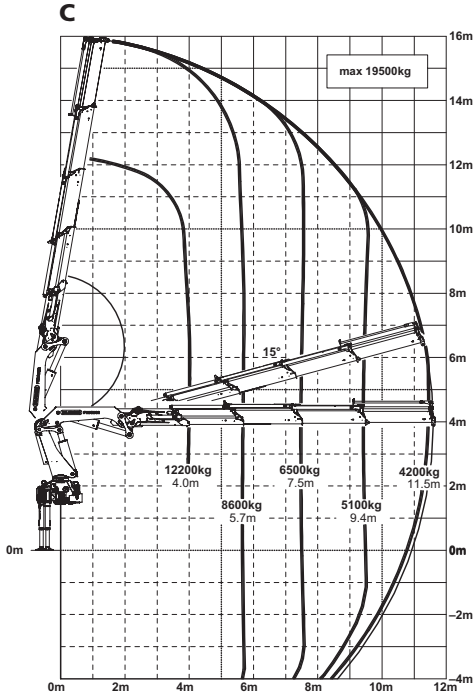
AOS^{*)}
Active Oscillation Suppression
inside

Powerhouse for cost-efficient application

Solid and reliable crane power with proven *High Performance* qualities. This is how the PK 56502 presents itself to the market. Operators benefit from its efficient power to performance ratio and high slewing torque. Equipped with Power Link Plus, maintenance free extension system and functional design elements this crane has all features that make customers around the world more successful.

PALFINGER large crane technology

PK 56502 High Performance



Technical Specifications (EN 12999 HC1 HD4/B3)

Max. lifting moment	52.2 mt/512.0 kNm
Max. lifting capacity	20200 kg/198.2 kN
Max. hydraulic outreach	16.2 m
Max. manual outreach	23.1 m
Slewing angle	370 °
Slewing torque	6.6 mt/65.0 kNm

Stabilizer spread (std.)	7.8 m
Fitting space required	min. 1.60 m/max. 1.71 m
Width folded	2.55 m
Max. operating pressure	320 bar
Recommended pump capacity	from 70 l/min to 80 l/min
Dead weight (std.)	5130 kg

