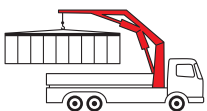


PK 6501

High Performance

PALFINGER CRANE

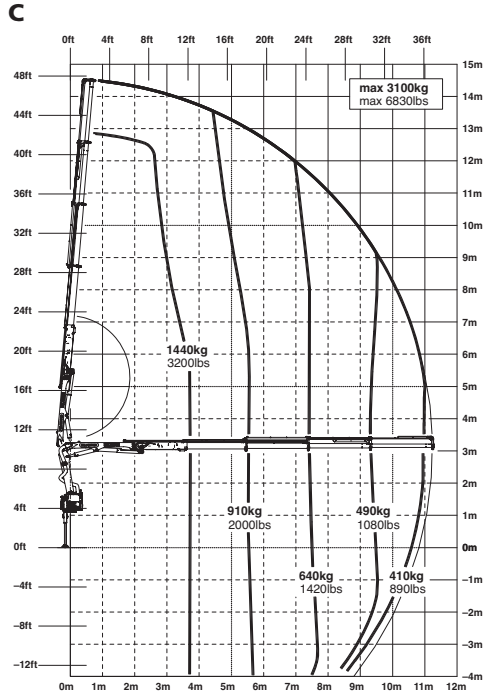
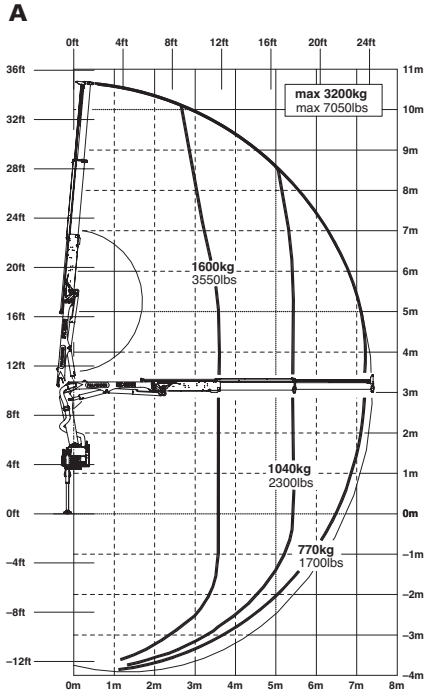


Flexible all-rounder with large outreach

The new PK 6501 is distinguished by its extraordinarily high efficiency. It can be employed for an array of tasks and allows for maximal capacity due to its optimal ratio of deadweight to lifting moment. The PK 6501 is ideally suited for mounting on light-weight truck chassis. Thanks to its sensitive control system and large hydraulic outreach, even heavy loads can be deposited with precision.

With a maintenance-free boom system

PK 6501 High Performance



Technical Specifications (EN 12999 H1-B3)

| | | | | | |
|-------------------------|-----------------|--------------|-------------------------------|---------------------------|------------------------------------|
| Max. lifting moment | 5.9 mt/57.9 kNm | 42690 ft.lbs | Stabilizer spread | std. 3.0 m/9' 10" | max. 5.0 m/16' 5" |
| Max. lifting capacity | 3300 kg/32.4 kN | 7270 lbs | Fitting space required (std.) | 0.66 m | 2' 2" |
| Max. hydraulic outreach | 11.2 m | 36' 9" | Width folded | 2.20 m | 7' 2" |
| Max. manual outreach | 12.9 m | 42' 4" | Max. operating pressure | 320 bar | 4640 psi |
| Slewing angle | 400° | | Recommended pump capacity | from 20 l/min to 30 l/min | 5.3 US gal./min to 7.9 US gal./min |
| Slewing torque | 0.8 mt/7.8 kNm | 5790 ft.lbs | RC-system | from 25 l/min | 6.6 US gal./min |
| | | | Dead weight (std.) | 754 kg | 1660 lbs |

